

COVID-19 UPDATE



STATE SENATOR

JIM RUNESTAD

15TH DISTRICT

OFFICE: 855.347.8015

E-MAIL: senjrunestad@senate.michigan.gov

VISIT: www.senatorjimrunestad.com

#MISENATE

STATUS UPDATE (4/6/20)

CORONAVIRUS RESPONSE (MICHIGAN)

- Governor Whitmer has issued 34 Executive Orders to deal with the public health crisis. Michigan has been under a declared state of emergency since March 10th.
- Governor Whitmer declared a 'shelter-in-place' order as of March 24th thru April 13th.
- DHHS Director Robert Gordon has increased penalties for violating the stay-at-home order up to \$1,000 and threatened businesses with losing their license if they are open and have been classified as non-essential. This civil fine is in addition to the \$500 criminal fine and 90 days in jail for violating the stay-at-home order.
- Chief Medical Executive Dr. Joneigh Khaldun said citizens should 'strongly consider' wearing masks in public, even if they are sewn at home from scrap fabric or old t-shirts.
- Governor Whitmer has activated the Michigan Army National Guard to assist DHHS in assembling and distributing medical supplies.
- Governor Whitmer clarified her order banning groups of 50 or more to exempt religious places of worship from any penalties.
- The state launched a new website www.michigan.gov/fightcovid19 to seek medical professionals and civilians to volunteer to help fight the pandemic.
- Detroit has been identified as a 'hotspot' for COVID-19 by the US Surgeon General.

LATEST EXECUTIVE ORDERS

EO 2020-38: Temporarily suspends strict compliance with rules governing responding to FOIA requests in order to protect public employees and respect current work-from-home norms.

Governor Whitmer issued two Executive Directives to restrict all discretionary spending in state agencies and instituted a hiring freeze for state government.

www.michigan.gov/coronavirus remains the best source of information on Michigan's response.

SHUTDOWN ORDER FAQ

Governor Whitmer has ordered all travel outside our homes to be restricted EXCEPT for the following reasons: 1) Engage in Outdoor Activity; 2) Work in Critical Infrastructure Jobs; 3) Seek Medical Attention; 4) Obtain Necessary Supplies for Themselves and their Homes (*using delivery services to the maximum possible extent*); 5) Care for a Family Member or Family Member's Pet; 6) Care for

Minors, Elderly and Other Vulnerable Persons; 7) Attend Court Ordered Services; 8) Volunteer to Provide Food/Shelter for Economically Disadvantaged Persons and People With Disabilities.

Approximately 25% of Michigan’s 4 million workforce can reasonably claim an exemption and report to work. Businesses that are non-essential can still designate certain employees to show up to work “to conduct minimum basic operations.” Governor Whitmer warned businesses, “not to play fast and loose with what is essential.”

Grocery Stores:	OPEN	Bars/Restaurants:	TAKEOUT ONLY
Pharmacies:	OPEN	Pot Shops:	TAKEOUT ONLY
Gas Stations:	OPEN	Gyms/Health Clubs:	CLOSED
Medical Marijuana:	OPEN	Non-Essential Retail:	CLOSED
Banks/Credit Unions:	OPEN	Cigar/Vaping Lounges:	CLOSED
Liquor Stores:	OPEN	Amusement Centers:	CLOSED
Car Repair Shops:	OPEN	Car Sales:	CLOSED
Hotel/Motels:	OPEN	Cinemas/Theatres:	CLOSED
Golf Courses:	CLOSED	Drive-In Movies:	CLOSED
Hardware Stores:	OPEN	Charter Fishing:	CLOSED
Appliance Repair:	OPEN	Firearms Retailers:	CLOSED

Critical Infrastructure workers are not expected to stay home but report to work as usual. Those involved in critical infrastructure are in the following fields:

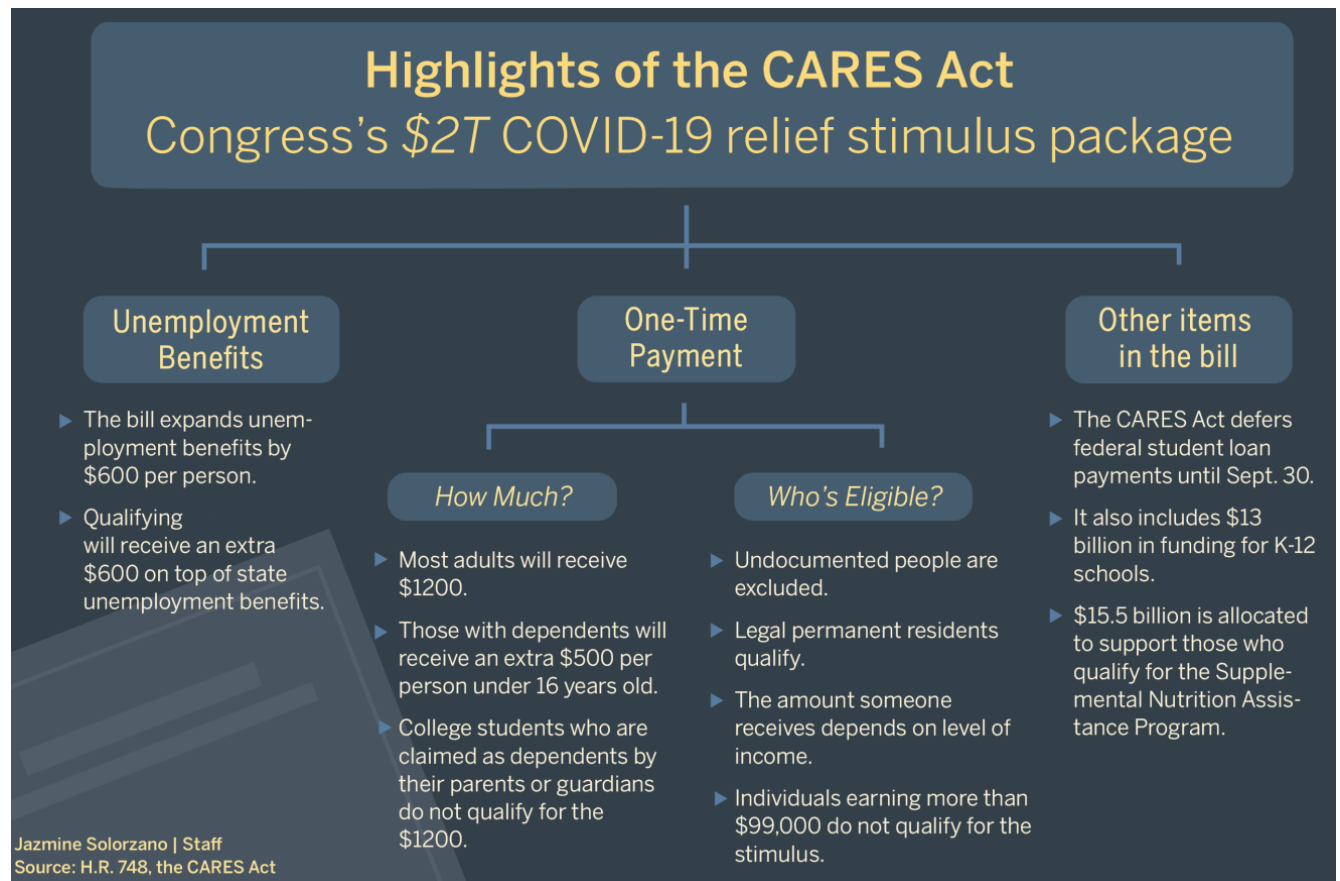


The Department of Homeland Security has released an update to their Critical Infrastructure List that states are using for their basis of their shutdown orders. You can view it here:

<https://www.cisa.gov/publication/guidance-essential-critical-infrastructure-workforce>

The state has created a web page to help businesses navigate whether or not their employees meet the definition of critical infrastructure for an exception to EO 2020-21. Go here: <https://bit.ly/2QR1tKf>

CORONAVIRUS RESPONSE (FEDERAL STIMULUS)



CORONAVIRUS RESPONSE (HELP FOR JOB PROVIDERS)

A new website has been launched – [Mipaycheckprotection.com](https://mipaycheckprotection.com) to help small business owners apply for the federal Paycheck Protection Program – a small business loan program through the US Small Business Administration. Firms can also look here for more information on federal resources available to job providers: <https://www.michiganbusiness.org/covid19/> and formally apply at this website: <https://disasterloan.sba.gov/ela/>

The Michigan Strategic Fund has approved up to \$20 million in support for small businesses. The Michigan Small Business Relief Program has allocated \$10 million in small business grants and another \$10 million in loans. The MEDC anticipates 1,100 businesses will be eligible for this type of relief.

Grant funding will be up to \$10,000 to each small business (50 employees or fewer) that has demonstrated financial hardship from the COVID-19 virus.

Loans are available between \$50,000 and \$200,000 to qualified small businesses (< 100 employees) that has been financially harmed by EO 2020-9 and cannot access credit from other financial entities.

Small Business Taxpayer Assistance Small businesses scheduled to make their monthly sales, use and withholding tax payments on 3/20 can postpone filing and payment requirements until 4/20. The state Treasury Dept. will waive all penalties and interest for 30 days. The waiver is not available for accelerated sales, use or withholding tax filers. Treasury Business Tax Call Center: 517-636-6925.

MEDC Call Center stands ready to support businesses looking for assistance through other available state programs. For more information, visit the MEDC's website: www.michiganbusiness.org or call 888.522.0103.

The Small Business Association of Michigan has a daily Facebook live feed to answer questions of job providers around the state. The feed is open to members and non-members alike. You can find them here at 3:00 p.m. <https://www.facebook.com/SmallBusinessAssociationofMichigan/>

[FisherPhillips.com](https://www.fisherphillips.com) has a FAQ for employers asking common questions related to COVID-19.

CORONAVIRUS RESPONSE (HELP FOR DISPLACED WORKERS)

Here is the link to the online application: <https://bit.ly/2WMnlVz> or you can call (865) 500-0017.

In response to the COVID-19 pandemic, Governor Whitmer has expanded the eligibility to:

- Workers who are sick, quarantined or immunocompromised and who do not have access to paid family and medical leave or are laid off.
- Workers caring for children out of school or ill family members and do not have access to paid family and medical leave or are laid off.
- First responders who become sick or are quarantined due to exposure to COVID-19 and do not have paid family and medical leave or are laid off.

Self-employed and contracted employees are still not eligible for Michigan Unemployment Assistance, but the federal stimulus package has expanded eligibility to this group of displaced workers through a Pandemic Unemployment Assistance Fund.

UNEMPLOYMENT INSURANCE

File Your Claim By **Last Name**

ONLINE FILING SCHEDULE:		CALL CENTER FILING SCHEDULE:	
 michigan.gov/uia		 1-866-500-0017	
A-L FILE CLAIMS Monday Wednesday Friday	M-Z FILE CLAIMS Sunday Tuesday Thursday	A-L CALL ON Monday & Wednesday	M-Z CALL ON Tuesday & Thursday
Saturday if you missed your days WEBSITE IS 24/7		Friday if you missed your days 8AM-5PM MON-FRI	

The day or time of day in which a claim is filed will not impact whether you receive benefits or your benefit amount. Additionally, your claim can be backdated to reflect the date you were laid off or let go due to COVID-19.

CORONAVIRUS RESPONSE (PUBLIC HEALTH)

Doctors now recommend that all Americans wear a facemask when interacting in public.

In order to use our finite testing resources most effectively, the following is the method of identifying and testing potential COVID-19 afflicted:

- 1) Contact your primary physician or nearest urgent care center if you think you are exhibiting symptoms. CALL THEM first and DO NOT drive to their location.
- 2) Your medical provider will call a 24/7 hotline to seek approval to have you tested.
- 3) If you are approved, you will be directed to one of many drive-thru testing sites being set up around the state. If you are not approved, you may still go through a private lab to arrange for your own testing.

- 4) Results of the test are generally expected in 5-7 days. The state is ramping up its own in-house testing procedures to create a faster turnaround time.

Symptoms of COVID-19: Fever, Cough, Shortness of Breath

The best way to prevent illness is to avoid being exposed to the virus which is spread from person-to-person contact. Wash your hands often for at least 20 seconds and avoid touching your eyes, nose and mouth. Clean and disinfect frequently touched surfaces daily. Stay home if you are not feeling well.

CORONAVIRUS RESPONSE (HOW YOU CAN HELP)

If your firm has retooled to produce personal protection equipment (PPE) and you want to get your products to those in need please contact your inquiries to dtmb-vendoremergency@michigan.gov.

The state launched a new website www.michigan.gov/fightcovid19 to seek medical professionals and non-medical to volunteer to help fight the pandemic.

SCHOOL STATUS

Governor Whitmer has closed schools for the remainder of the year. Districts will develop plans to ensure their students continue to learn and implement them no later than April 28th.

CORONAVIRUS RESPONSE (STATISTICS)

There are currently **17,221** cases of COVID-19 in the state of **Michigan** with **727** deaths reported.

There are currently **352,546** cases of COVID-19 in the **United States** with **10,389** deaths reported.

There are currently **1,324,907** cases of COVID-19 in the **World** with **73,703** deaths reported.

COMPLETE LIST OF EXECUTIVE ORDERS

Please go to www.michigan.gov/coronavirus to find a complete list of the Governor's Executive Orders to deal with the COVID-19 pandemic.